



MOVIN' ON UP

Williamson County Fire Protection District



*Tender – 2016 Mid-State Tank,
Freightliner 3000 gallon/500gpm
Darley pump*



*Engine – 2014 Ferrara
Ember 1750gpm/1000 gallon*



*Brush truck - 2016 Dodge 3500, Cummins
diesel, 300 gal. CET skid, PowerArc
Emergency Lighting*

BACKGROUND:

The Williamson County Fire Protection District came into existence in 1988 by referendum. The district is governed by a 5 person board of trustees from throughout the coverage area. After hiring a fire chief and acquiring property and equipment we started running calls in late 1990.

The district covers all unincorporated areas in Williamson County, IL and an approximated population of 39,000; this constitutes an area of approx. 265 sq. miles and includes the villages of Creal Springs, Freeman Spur and Whiteash. The District also covers by contract the Veterans Airport of Southern Illinois and they are part of MABAS Div. 45. Service is provided out of 7 stations spread though out the district.

Currently personnel include a full time fire chief, 3 fulltime firefighters, 3 part time Battalion Chiefs, 1 fulltime secretary and 72 volunteers and average 300 calls per year with an annual operating budget of \$900,000.

With a district this size the challenge has always been equipment and manpower. Due to the lack of usable water systems in the county, a very robust tender operation was developed. The district is known for its ability to haul water; this has been put to the test several times over the years. Every station holds an engine, tender and brush truck. Currently, we provide fire, rescue, hazmat and ARFF to our citizens. The biggest hazard in the district is Interstate 57 which divides the district north to south.

THEN VS. NOW:

The biggest challenge the district has faced is the development of a functional fire department from scratch. Under the leadership current and former chiefs, the district grew into the organization it is today. Many needs were realized over the years and fulfilled by careful study of the problem and planning to fix the issue.

NEW STATION, NEW EQUIPMENT:

Starting in 2010, a fleet improvement plan was developed and implemented. Since then, three new engines have been purchased, another engine is on order, two engines were rehabbed, a (3,000 gal) tender was built, another (2,000 gal) tender received a new chassis, three brush trucks were purchased with another currently on order and two John Deere gators were acquired.

Movin' On Up

Continued from page 48

Their current fleet consists of 30 pieces of equipment, ranging in age from 1987 to 2017. When the replacement plan is completed the oldest frontline equipment will be a 1997 engine.

The District is currently working with an architect on designs for a new station to replace the current Station #1. The current building was originally built in the 1940's as a car dealership and in need of extensive repairs.

ANY ADVICE FOR SIMILAR DISTRICTS:

The district has been fortunate over the years and received several grants and was accepted for the firetruck

revolving loan in 2008. The current fleet replacement is being funded through traditional methods. We are fortunate in that Williamson County is growing and helped tremendously.

WHAT'S NEXT FOR YOUR DISTRICT?

After the fleet replacement is finished and the new station is built, we will be looking at increasing our fulltime staffing.

Trustees:

President, Terry Pike
Secretary, Steve Land
Treasurer, Matt Lee
Trustees, Gary Hill and David Anderson

Fire Chief, Jeremy Norris

Full Time Staff:

Batt. Chief Eric Miller
Lt. Thomas Mann
Lt. Kyle Masters
Secretary Venita Brafford

Part Time Staff:

Batt. Chief Joe Hale
Batt. Chief Bryan Burgess

BONDS: It's What We Do!

Developing Financing Options for Fire Districts



Anne Noble
Managing Director



Kevin Heid
Managing Director



Tom Crabtree
Director



Sean McCarthy
Director



Brittany Pullen
Director

Bond Underwriting – Keeping Taxes Low

- Financing for New Fire Stations and Equipment
- Coordinate the Rating Process
- Develop the Marketing Plan
- Select the Time to Market the Bonds
- Sell Bonds Locally

(800) 230-5151, Extension 8457

501 North Broadway, 8th Floor
St. Louis, Missouri 63102

2101 Eastland Drive, Suite B
Bloomington, Illinois 61704

STIFEL | Public Finance

Stifel, Nicolaus & Company, Incorporated | Member SIPC & NYSE | www.stifel.com/publicfinance

MOVIN' ON UP



Mount Sterling Fire Department & Brown County Fire Protection District

Chief:

Brian J. Gallaher

Personnel:

22 firefighters including officers

Station Address:

835 Route 24 West
Mount Sterling, IL 62353

District Size:

City of Mount Sterling – 3 sq. miles
Brown County FPD – 236 sq. miles

Population:

City of Mount Sterling – 2,500
Brown County FPD – 3,000

Annual Calls:

Fire (City & District) 150,
EMS (Brown County Ambulance Service) – 600

Services:

- Fire, Rescue
- Haz-Mat Ops.
- MABAS (Division 44)
- ALS & BLS Ambulance Service

The Mount Sterling Fire Department was organized in 1886 and protects the city of Mount Sterling located in west central Illinois. Mount Sterling is approximately three square miles in size with a population of about 2,500 residents. We are located in Brown County and Mount Sterling is the County Seat. Our department consists of 22 volunteer members (They do receive a stipend from the city of \$2,000 annually) including the chief, two assistant chiefs and two captains.



In addition to the Mount Sterling Fire Department, the same officers and members staff the Brown County Fire Protection District. The district covers 236 square miles of Brown County's total 307 square miles. The district does not include the City of Mount Sterling. The Brown County Fire Protection District was formed in 1988 and prior to that, the rural areas surrounding Mount Sterling were protected by the Brown County Rural Fire Protection Association. This was a subscription type of service that covered the same area that the fire protection district now covers.

Due to the fact that the same personnel staff both the city fire department and the fire protection district, we function basically as one department. The city department owns and maintains three engines and a heavy rescue truck. The fire protection district owns and maintains an engine, a 2,500 gallon tanker and two brush trucks, one of which is housed at a second station in Timewell. In addition to this equipment, we have a Haz-Mat trailer with operation

level equipment, two boats for water rescue and a Kubota side by side with a brush rig/med bed for fighting brush fires and evacuating patient's from areas that an ambulance cannot reach.

Funding for the city department is allocated through the Mount Sterling City Council. The Board of Trustees of the Brown County Fire Protection District oversees the district financing. The combined budget between both departments is approximately \$140,000.

In 1999, work began on trying to secure funding for a new station to house both fire departments and the Brown County Ambulance Service. A grant was awarded that same year by the State of Illinois for the purpose of purchasing ground for a new station. Over the course of the next few years, additional grants were secured from the State of Illinois and other funds were raised by members of the fire departments, the ambulance service personnel and interested citizens of the community. Ground was broken in the fall of 2002 for the new station. Work

Continued on page 45

Movin' on Up

Continued from page 44

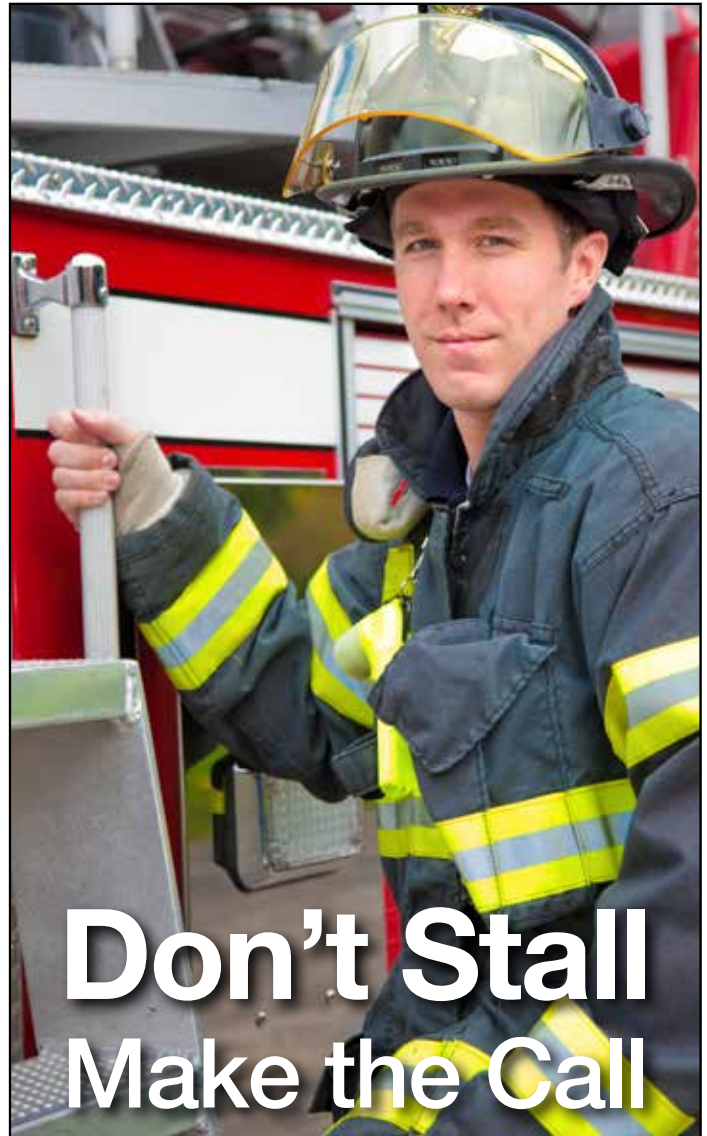
was completed as funds became available and in the fall of 2009, we moved into our new home. The new station is 15,000 square feet with living quarters in the middle separating the fire bays on one end and the ambulance bays on the other end. There are a total of four double drive-thru bays on the fire department side and two double drive-thru bays on the ambulance side. Prior to 2009, both fire departments were housed in a 5,000 square foot station in the Mount Sterling City Hall complex and the ambulance service was housed in the county highway department garage.

Mount Sterling has a large employment base thanks to Dot Foods, Inc. Dot Foods is the nation's largest food re-distributor with approximately 3,000 employees at its headquarters in Mount Sterling. Their facilities include dry, frozen and cooler warehouse space along with office and retail space. In addition to Dot Foods, there is a 2,000 bed maximum security state penitentiary in Mount Sterling. Due to the size of these two facilities in particular and because of a downtown area with many large buildings, the fire department has worked hard for several years to try to secure funding to purchase an aerial apparatus. In October of 2014, the City of Mount Sterling & the Brown County Fire Protection District purchased a 2013 E-One HP78 E-Max aerial (Demo Unit). The city council and the board of trustees each allocated money toward the purchase and in addition to that, the firefighters pledged \$100,000 toward the aerial from fund-raiser money. Dot Foods kicked in \$60,000 toward the purchase of the aerial as well. Dot Foods has also contributed many thousands of dollars towards the construction of our new station as well as for other equipment that we have needed over the years.

Our department is very heavily involved with public awareness and education. We conduct fire safety presentations for all students in the county ages Pre-K thru 4th grade. We also do fire safety presentations for various community groups. We conduct countless CPR/AED/First Aid classes throughout the year as well.

Future plans/goals include building on our public education program and continuing our fundraising efforts for additional equipment.

My advice to other departments/districts would be to follow through with the dreams and wishes that you have for your department. We are living proof that through dedication and hard work, you can accomplish whatever it is that you set your mind to! ■



Don't Stall Make the Call

Natural Gas Accidents

If the odor of natural gas is reported in your area or if you smell natural gas at a scene, clear the area and call Ameren Illinois 24 hours a day, 7 days a week.

First Responders Emergency Services

Call 1.800.767.8048



Don't Wait - It Might Be Too Late



Know what's below.
Call before you dig.



MOVIN' ON UP

Lockport Township Fire Protection District



Serving with pride since 1895

Fire Chief: David Skoryj

Trustees: David Palya, Paul Siegel, Henry Meader, Gordon McCluskey, William Kendziora

The **Lockport Fire Protection District** is unique in its geographic boundaries. The east and west boundaries are between I-55 and I-355. World Famous Route 66 (Illinois Route 53) passes through the district connecting Joliet, Crest Hill, Romeoville and Lockport with I-55. The south boundary is the 4th largest city (Joliet) in the state. Citgo Refinery is located on the north boundary of the district although protected by a neighboring district. The potential for disaster exist everywhere in the district.

Lewis College airport has a 6,500 foot runway. Planes are seen landing and taking off hourly during race day at the Chicagoland Speedway Joliet, IL. Stateville Correctional Center is home to 4,500 residents within the district. A 48 foot high-level bridge over the Chicago Sanitary Canal and two high speed rail tracks connect the east side of the district with the west side. Lehigh Hanson's Romeoville massive stone quarry extends under Illinois Route 53 to the Sanitary Canal. The locks on the Chicago Sanitary Canal (Lockport) are one of the tallest locks

in the world 42 feet in height. The district has many new homes and businesses. Although, the historic district of Lockport businesses and homes date back to pre-civil war days and even earlier.

Through voter approval Lockport Township Fire Protection District is well equipped and trained to protect lives and property.

- 42 square miles
- Protecting portions of the City of Lockport, City of Crest Hill, Village of Romeoville and Seven Townships in Will County.
- Population served = 77,000
- EAV = \$1,461,391,325
- Stations = 6
- 2015 call volume = 8,956
- MABAS Divisions 10/15/19
- 86 Firefighter/Paramedics
- 1 = Fire Chief
- 2 = Deputy Chiefs
- 3 = Battalion Chiefs
- Support Staff = Administrative Assitant, Director of Finance, Accounts Payable/HR, Fleet EVT, 5 – Fire Inspectors.

- Non-Emergency Services = Block Parties, Football Game Standby, CPR Classes, Public speaking Events.
- Emergency Services
- Fire Suppression
- EMS
- Fire Prevention
- Fire Investigation Team
- Technical Rescue Team
- Underwater Search and Recovery Team
- Hazardous Materials Team
- ARFF Team
- www.lockportfire.org
- District Background

The Lockport Township Fire Protection District was started in 1895 as a volunteer fire department within the City of Lockport after a catastrophic fire burned half of the downtown. The district evolved into a Fire Protection District in 1956 and transitioned into a fully career department in the 1980's.

Between 1990 and 2008, the district experienced explosive growth of both residential and commercial development.

Continued on page 47

Movin' on Up

Continued from page 46

To address the growth the district had to grow with the area to maintain the desired level of service the community demanded. Station 3 was constructed in 1998, Station 4 opened in 2006, Station 5 opened in 2007, and Station 6 opened in 2009. With the opening of each station, the district also needed to purchase equipment and hire staffing.

Fire cause and origin is handled by a team of firefighters trained to OSFM standards in fire and arson investigation.

The district is a member of MABAS Division 19 and participates in the division specialty teams. Our underwater search and recovery team is equipped with a 32 foot boat that the district was able to obtain from a Port Security Grant due to the district covering 6 miles of the Chicago Ship Canal. The team is one of the few in the state to be equipped with an remote underwater camera that allows the team to view underwater hazards before divers enter the water.

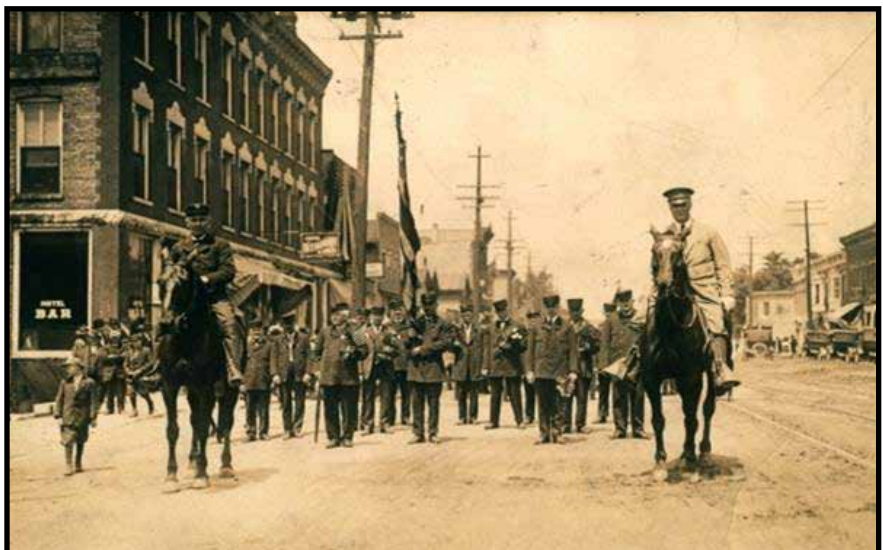
Our Hazardous Material Team is part of the MABAS 19 Southwest Hazardous Materials Team. With the assistance and support of MABAS, this team is equipped with the necessary equipment needed to handle most incidents that occur in the region.

The Lockport Fire Protection District also provides coverage for the Lewis University Airport (LOT). Averaging 258 aircraft operation per day, LOT operations has grown from general aviation to corporate jet traffic. Annually the district staffs a special duty crew at the airport when NASCAR uses this airport for a local race. The district has two military surplus ARFF units to provide the needed capabilities for this hazard.

With the continued support of the community, the Board of Trustees of the Lockport Township Fire Protection District strives to provide the highest level of service to the communities that we serve. ■



Downtown Fire of 1895



The Lockport Fire Department August 10, 1918



First Aerial Ladder – October 1961